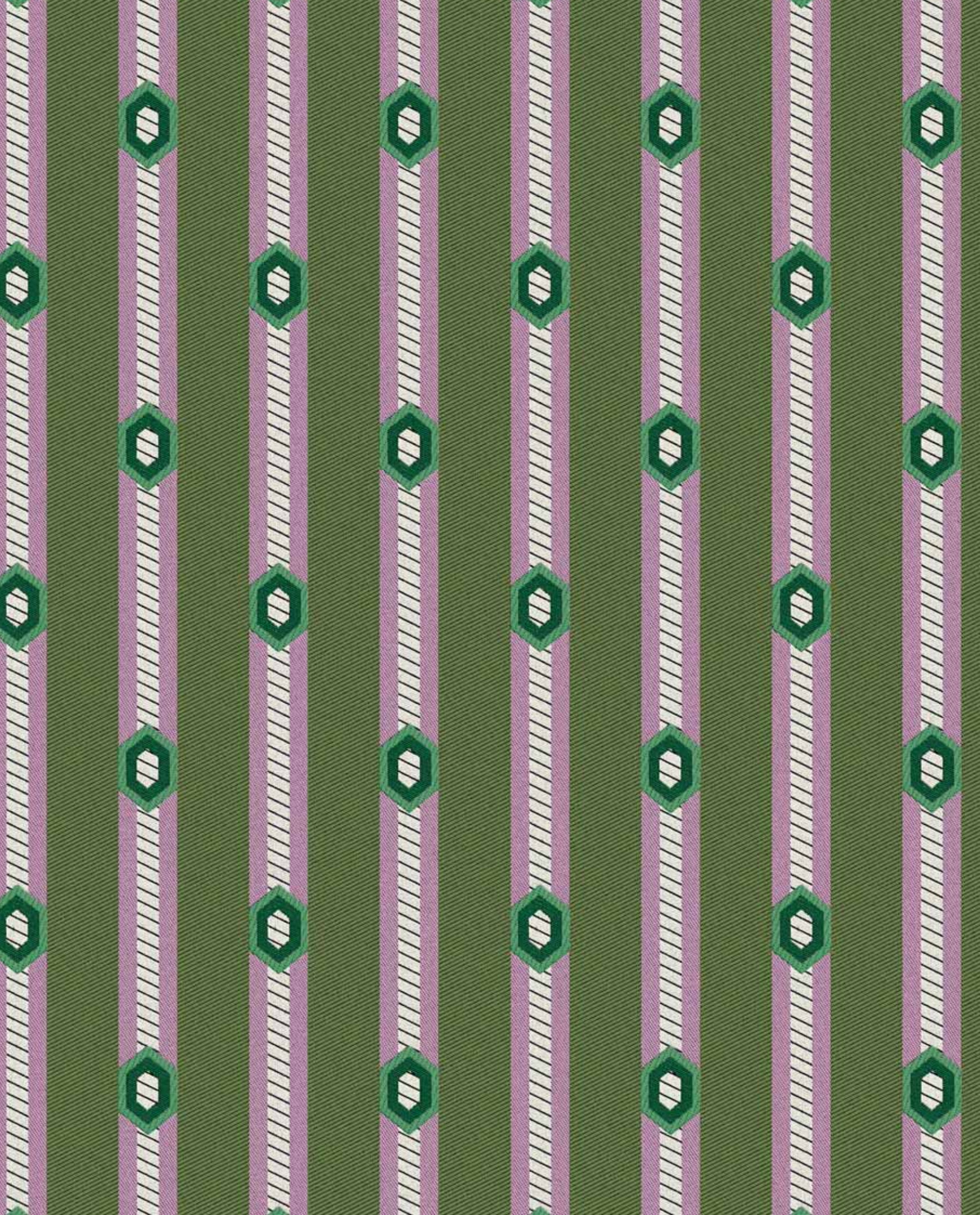
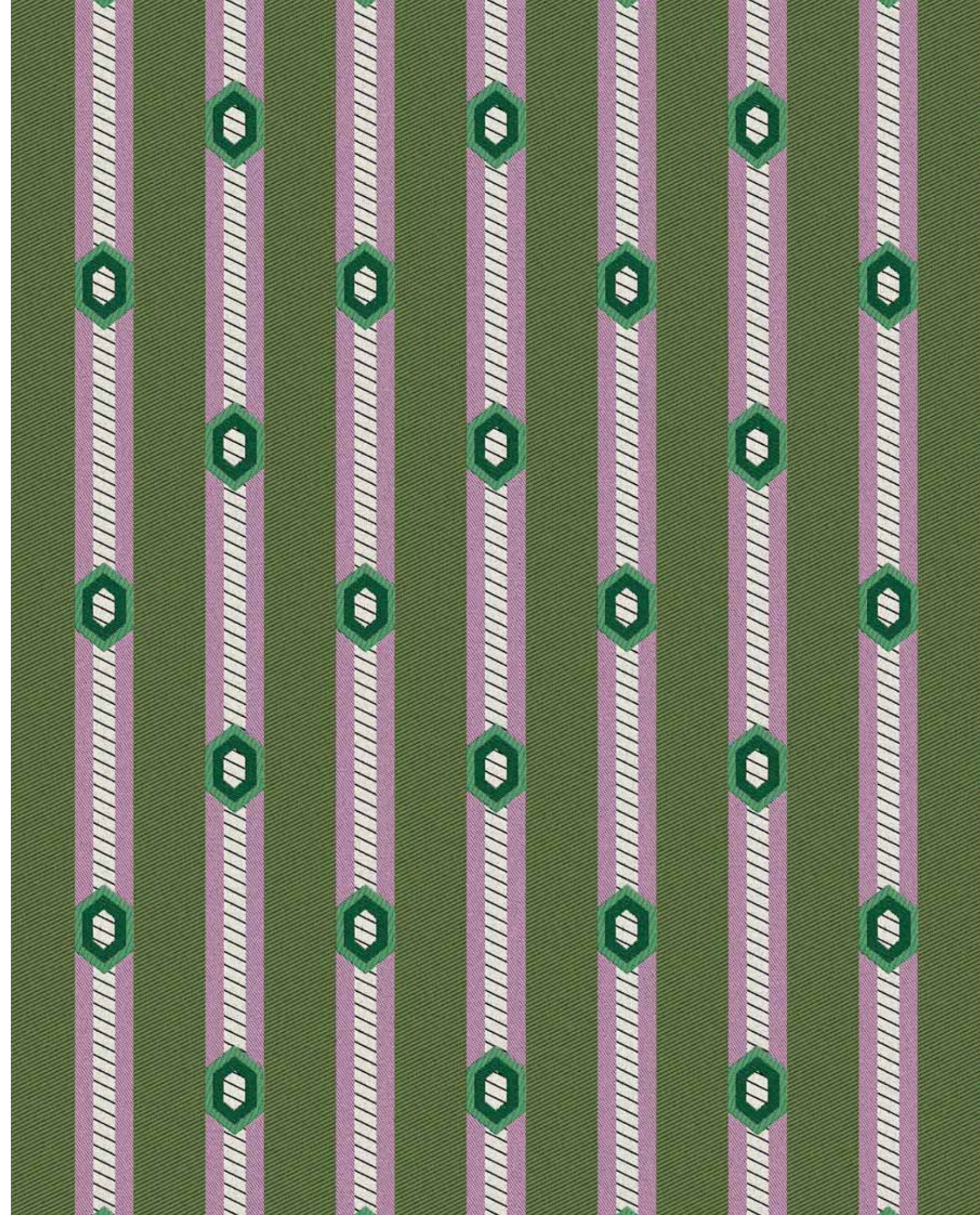


LUKE EDWARD HALL FOR RUBELLI















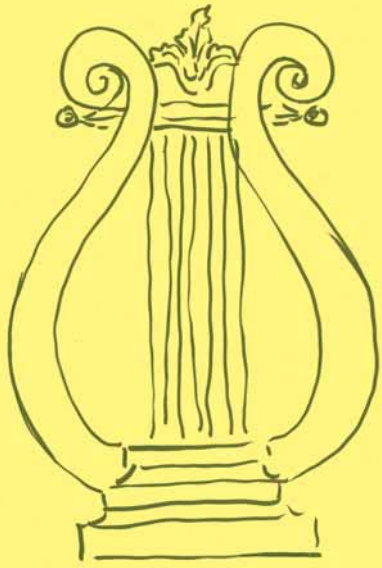
RETURN  
TO  
ARCADIA

LUKE EDWARD HALL FOR RUBELLI









*“When I am designing a room, one of the most crucial elements is the mix of fabrics, and this idea was the starting point for my collection with Rubelli. My favourite kinds of fabrics make up the collection: stripes and florals, geometrics, small patterns and big patterns. My inspiration for the designs came from my garden in the English countryside, and my love for Ancient*

*Greek and Roman art and architecture shines through: lyres, temples, statues and classical faces appear amongst the flowers, leaves and stars. Colour is key in my entire output, and my favourite hues are splashed across this range: dusty violet, olive green, mustard and pale pink, emerald, sky blue and burnt orange... I am particularly proud of the fact that each of the designs started with drawings - even the stripes were hand drawn by me before being made into digital patterns. The result is a collection with a very handmade feeling, full of character and joy.”*

*Luke Edward Hall*







*“Quando progetto gli interni, uno degli aspetti ai quali presto maggiore attenzione è il mix di tessuti. Questa idea è stata il punto di partenza per la mia collezione con Rubelli. La capsule include le tipologie di tessuti che preferisco: righe e floreali, geometrie, piccoli e grandi motivi. Per i disegni mi sono ispirato al mio giardino nella campagna inglese. Al tempo stesso traspare il mio amore per l'Antica Grecia, l'arte e l'architettura romana: lire, templi, statue e volti classici compaiono tra fiori, foglie e stelle. Il colore è fondamentale in tutte le mie creazioni e nella collezione compaiono le mie tonalità preferite,*



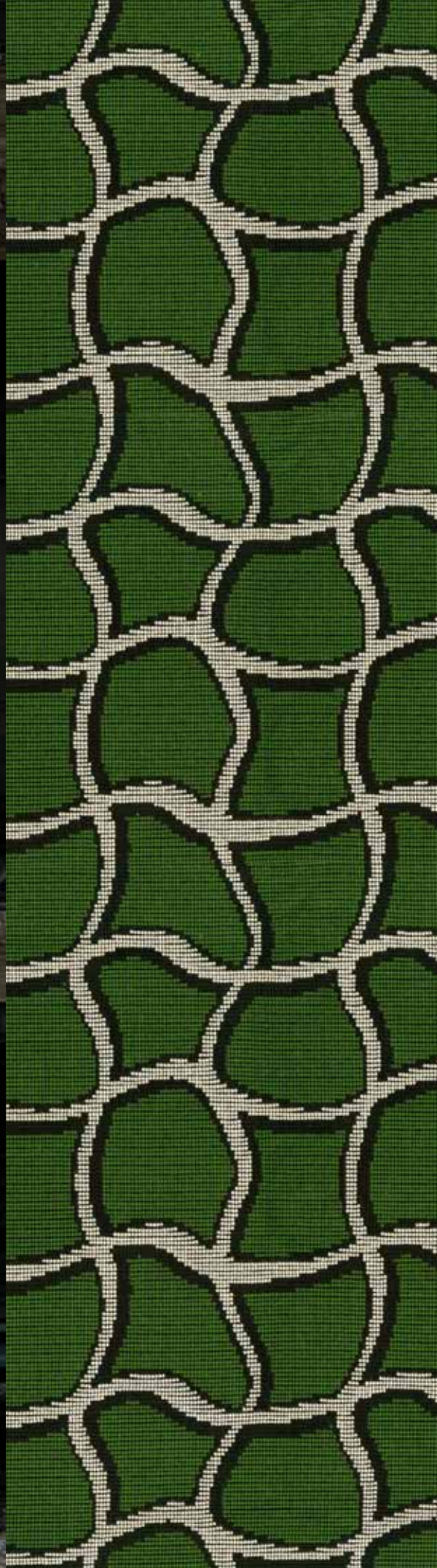
*qua e là nella palette: lavanda, verde oliva, senape e rosa pallido, smeraldo, azzurro e arancione bruciato... Sono particolarmente orgoglioso del fatto che ogni motivo ha preso vita dai bozzetti: ho disegnato a mano persino le righe, che poi sono state trasformate in formato digitale. Il risultato è una collezione dal carattere artigianale, piena di personalità e gioia”.*

*Luke Edward Hall*

























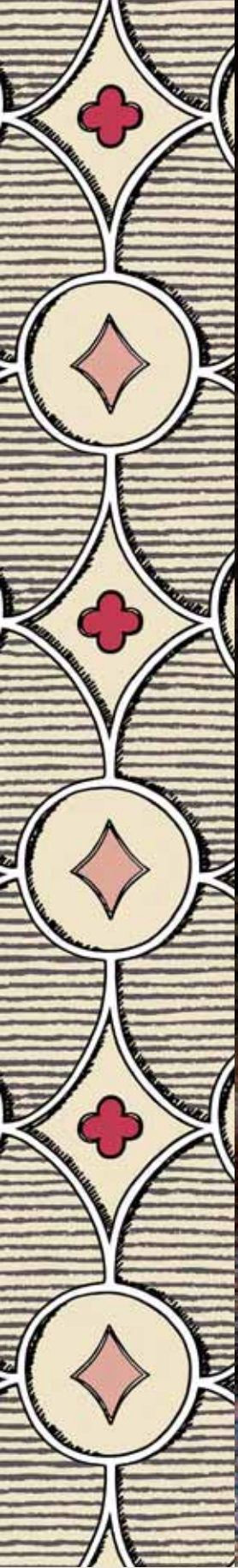




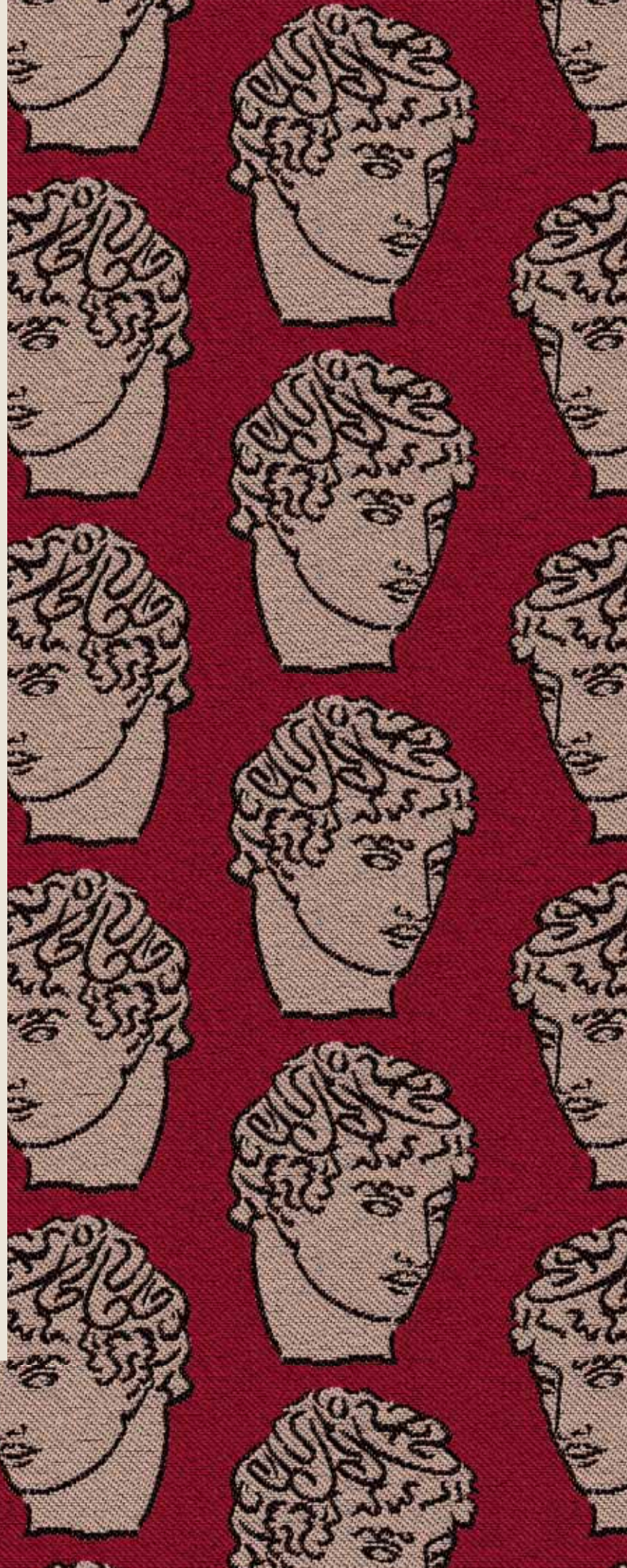
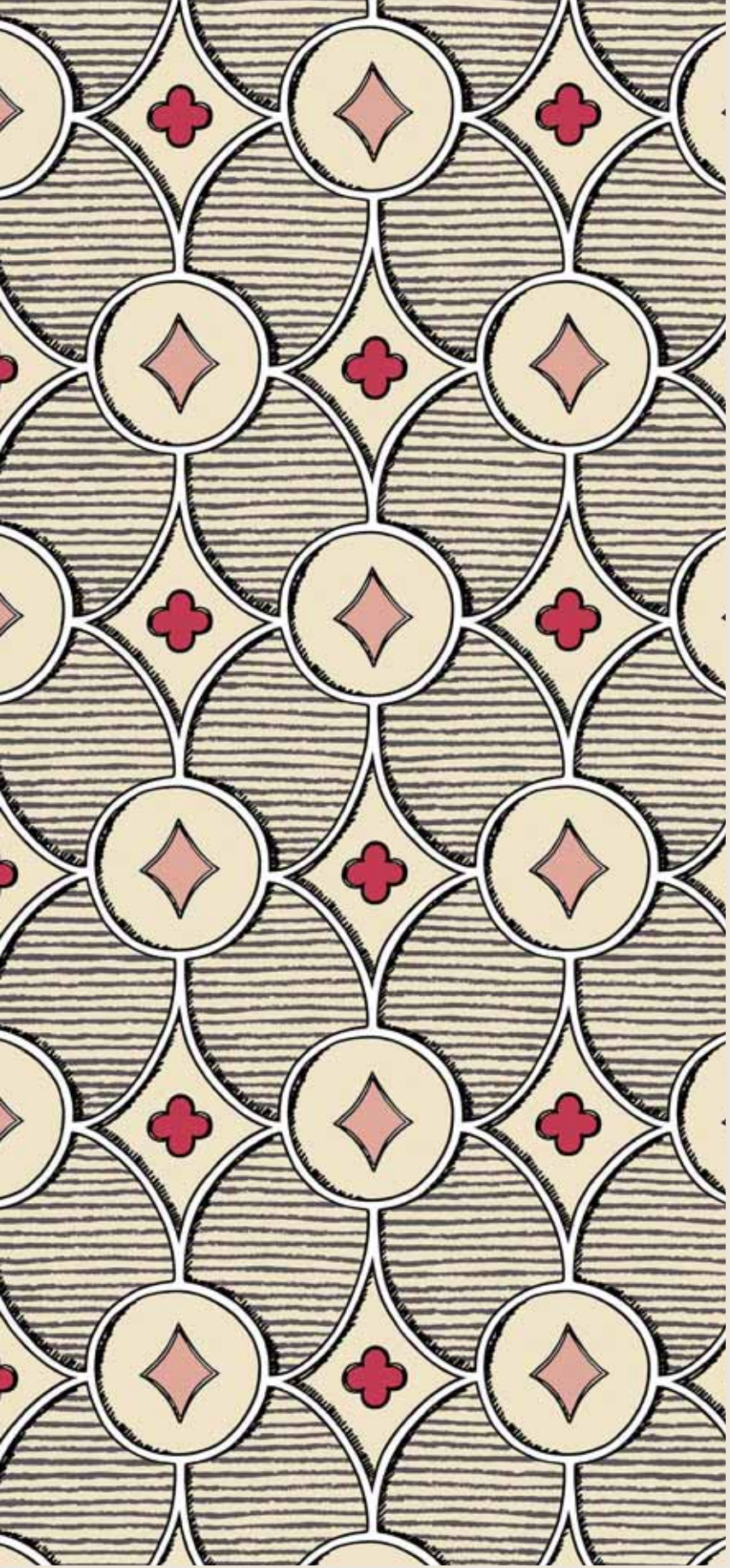




















































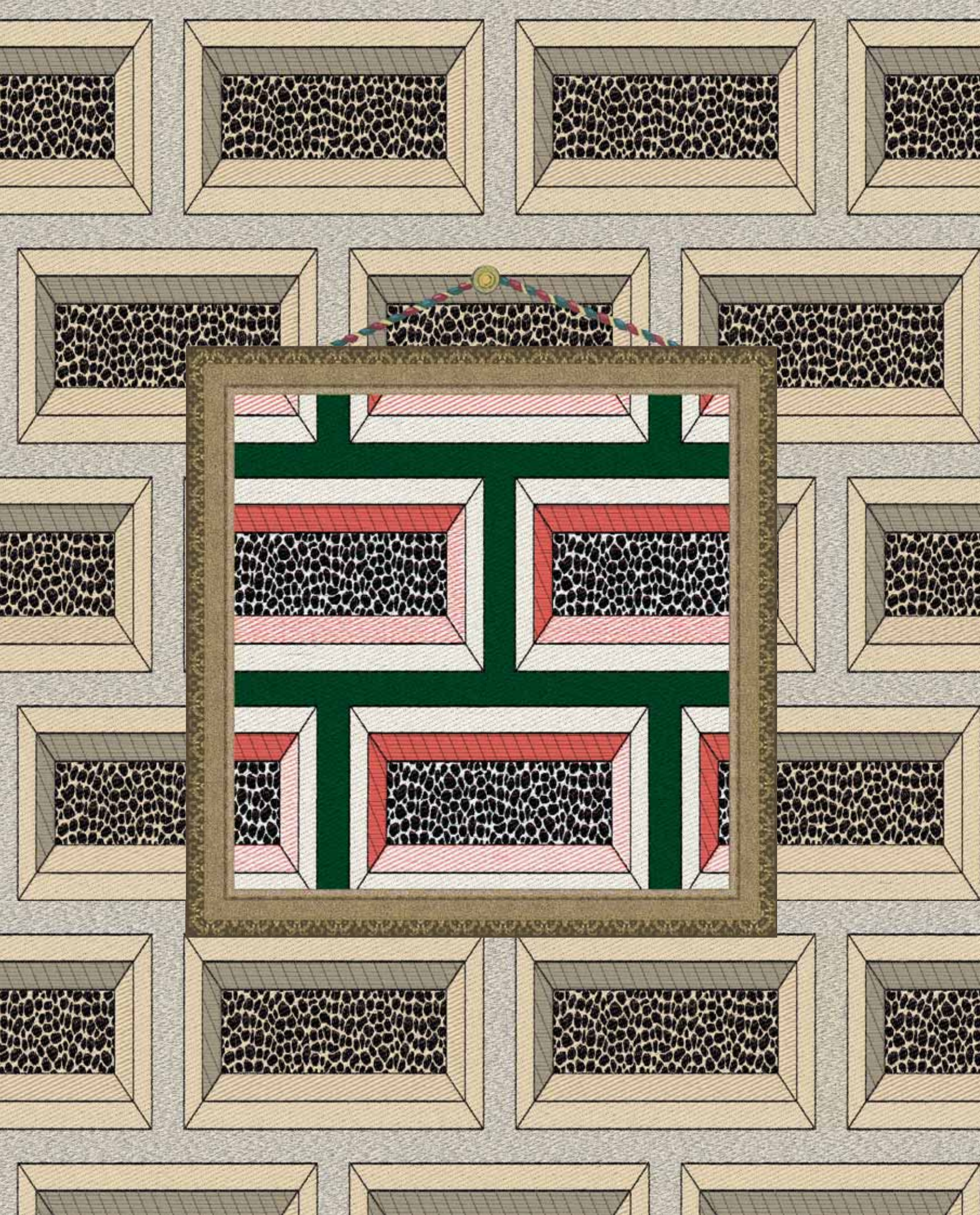




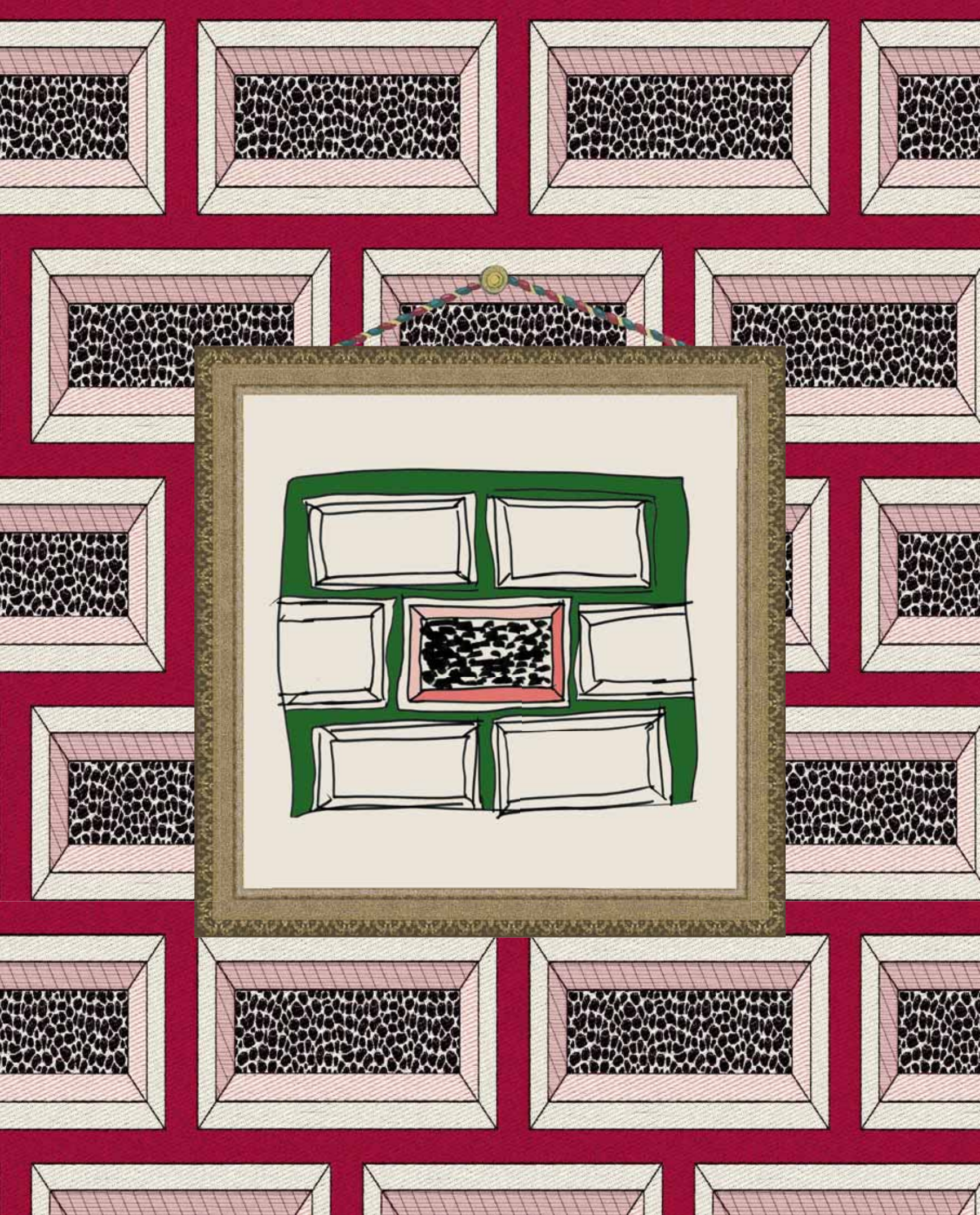








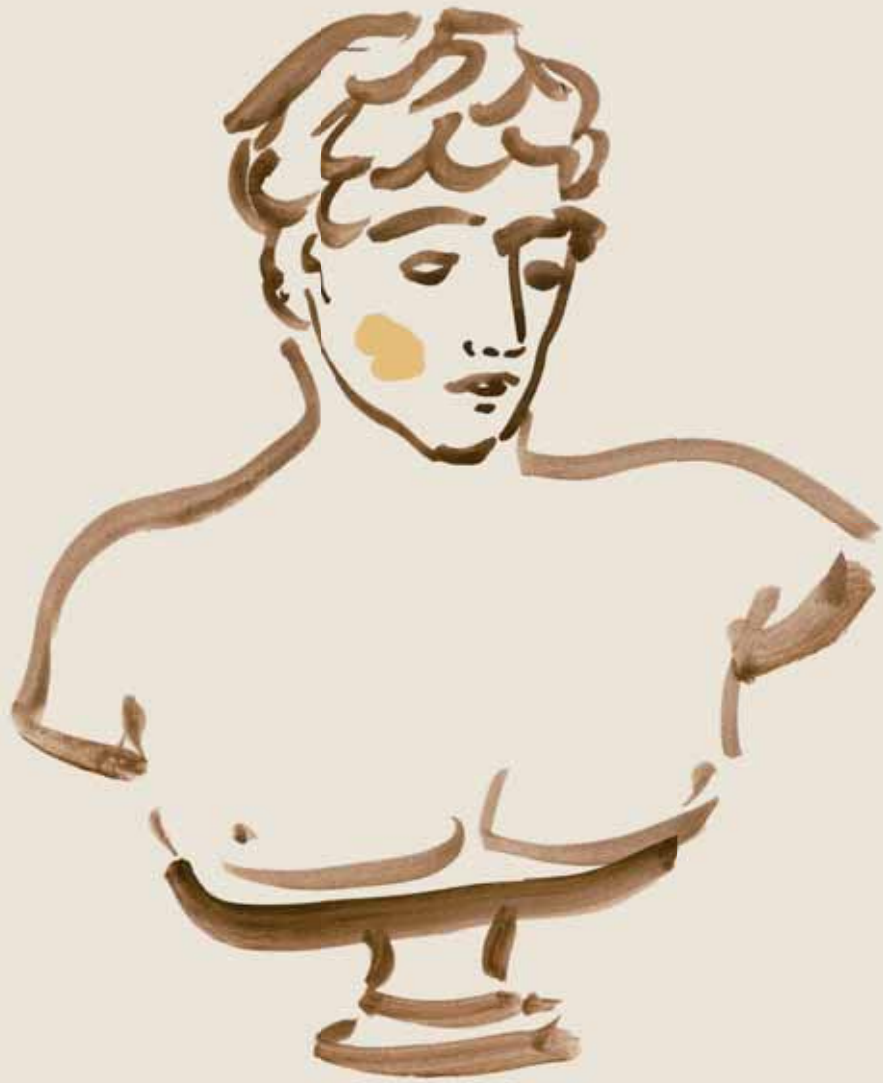




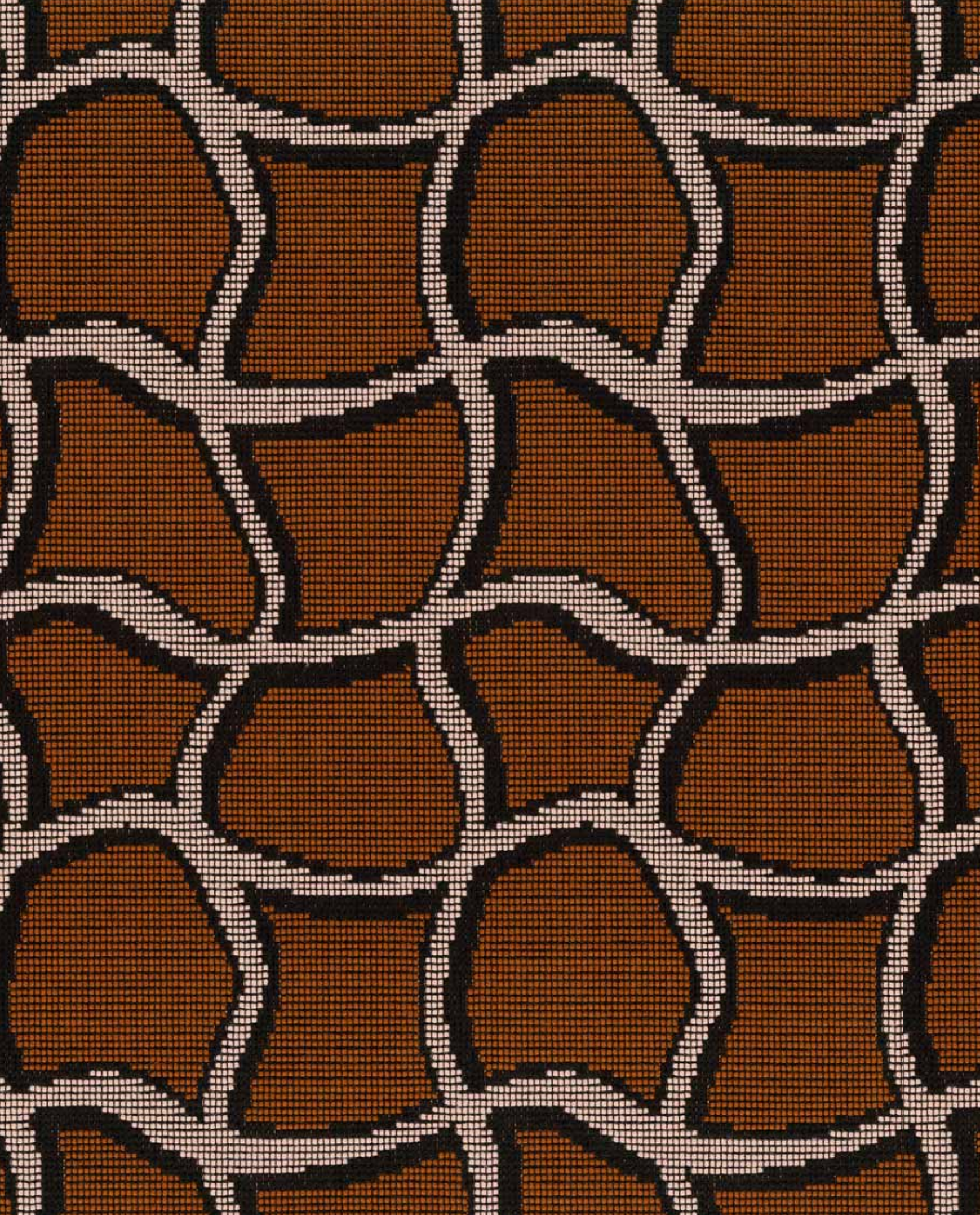
















*Abacus*

\*

*by Luke  
Edward  
Hall*







# Antinous

30500

Portraits of Antinous, Greek favourite of the Roman emperor Hadrian. I have always been drawn to figures of the ancient Greek and Roman worlds, and the story of Antinous is a fantastic one, although sadly rather tragic in the end. Renowned for his beauty, Antinous will forever be a beguiling character.

*Ritratti del giovane greco Antinoo, favorito dell'imperatore romano Adriano. Sono sempre stato attratto dai personaggi dell'Antica Grecia e della civiltà romana, e Antinoo ha una storia fantastica, sebbene triste e dal finale piuttosto tragico. Famoso per la sua bellezza, Antinoo sarà per sempre una figura seducente.*

Composition:  
36%CO 33%AC 31%PA-eco

Width: 140 cm - 55"  
Vertical repeat: 5cm - 2"  
Horizontal repeat: 8.5cm - 3"  
Weight: 370gr/ml

Heavy use  
*Uso frequente*

Notes:



30500-1  
Emerald



30500-2  
Red



30500-3  
Mustard

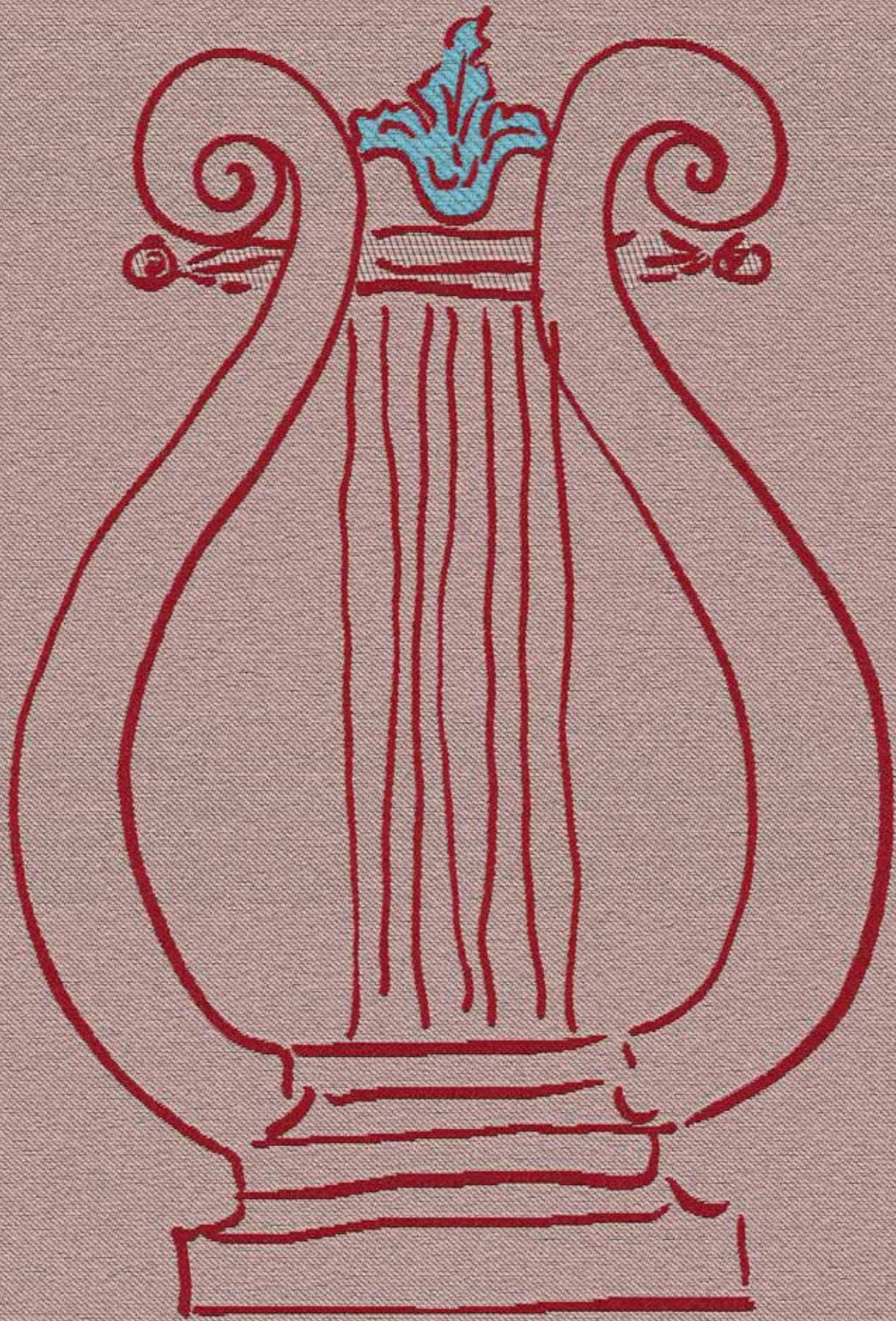


30500-4  
Sky Blue



30500-5  
Silver







# Lyres

30501

Sketches of a lyre, inspired by classical antiquity. The soft music of the classical world can be heard, almost, as Lyres shimmers in a soft summer breeze.

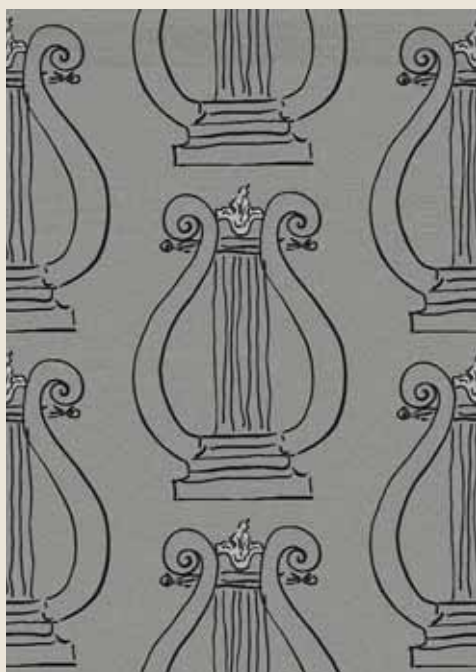
*Nasce dallo schizzo di una lira, che rimanda all'antichità classica. Osservandolo brillare nella tenue brezza estiva, sembra quasi di sentire la musica provenire dal mondo classico.*

Composition:  
42%CO 30%CU 28%PA-eco

Width: 140 cm - 55"  
Vertical repeat: 22cm - 8.5"  
Horizontal repeat: 35cm - 14"  
Weight: 410gr/mtl

Heavy use  
*Uso frequente*

Notes:



30501-1  
Silver

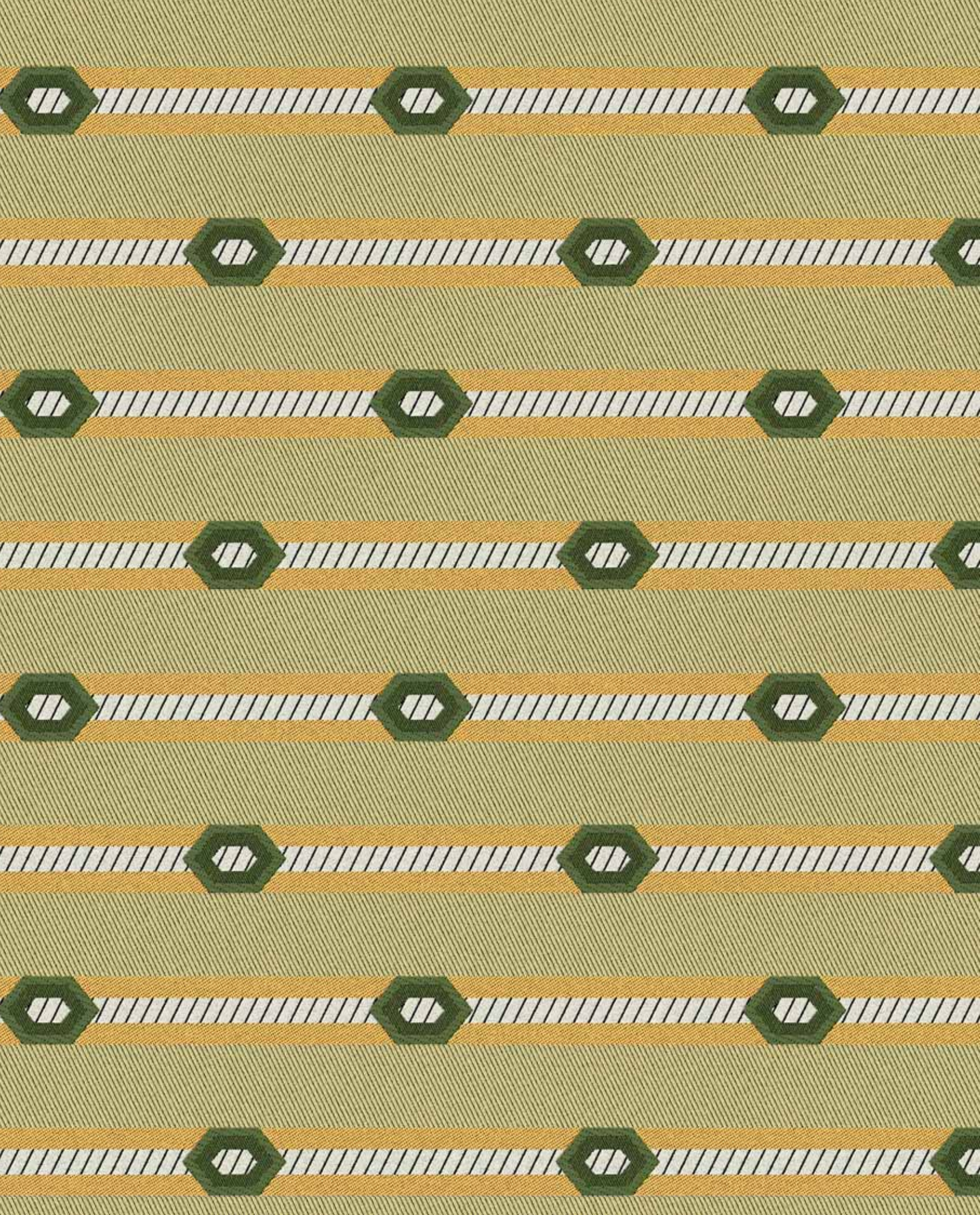


30501-2  
Pistachio



30501-3  
Pink







# Diamond Stripe

30502

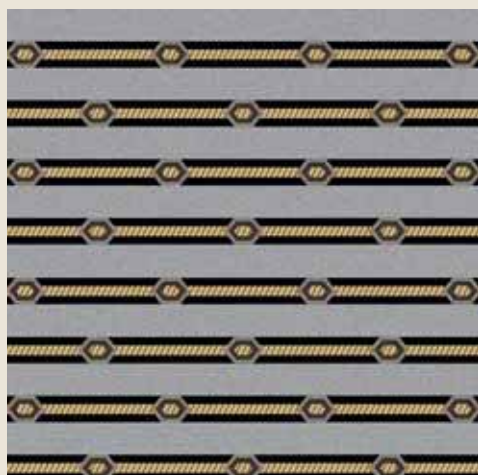
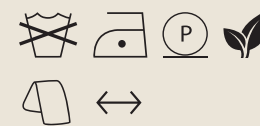
An elegant stripe made playful with the addition of diamond-shaped motifs. A stripe for me is essential in almost every room, but why stick to the usual versions?  
*Una riga elegante resa giocosa dall'aggiunta di motivi a forma di diamante. Una riga per me è fondamentale quasi in ogni interno, ma perché accontentarsi di una versione banale?*

Composition:  
46%CO 31%PA-eco 23%AC

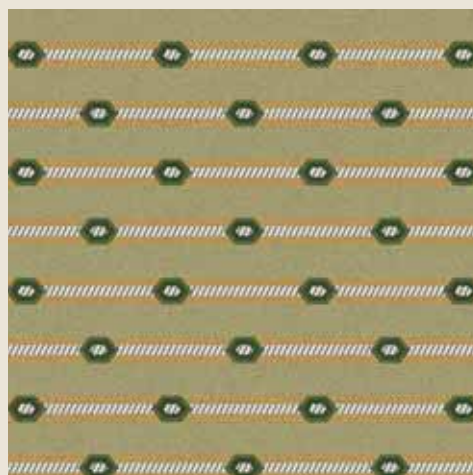
Width: 310cm - 122"  
Vertical repeat: 6cm - 2.5"  
Horizontal repeat: 8.5cm - 3"  
Weight: 730gr/ml

Heavy use  
*Uso frequente*

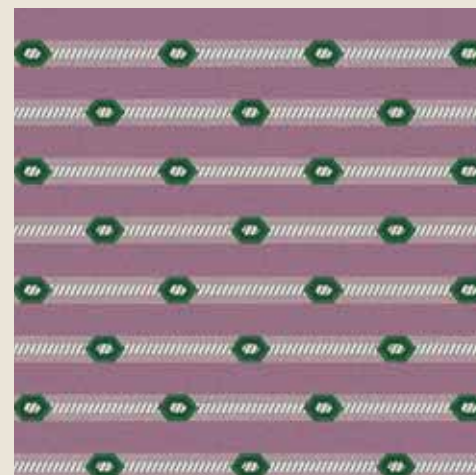
Notes:



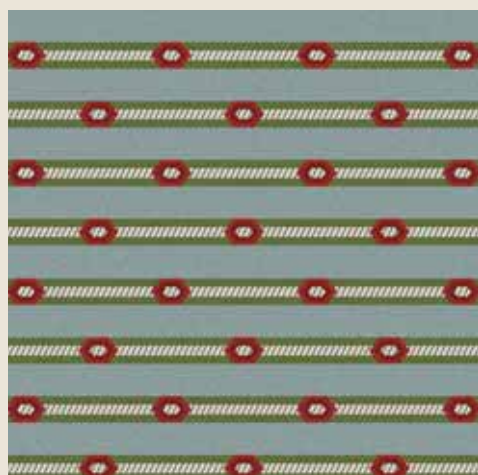
30502-1  
Silver



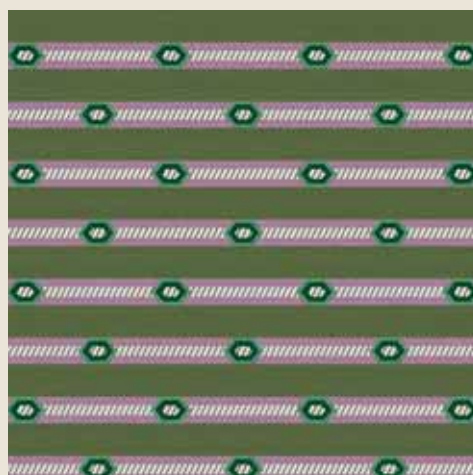
30502-2  
Yellow



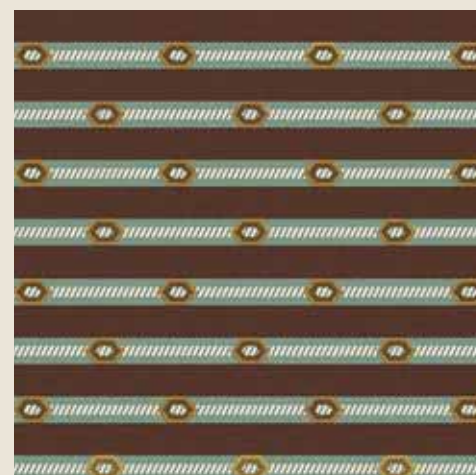
30502-3  
Lavender



30502-4  
Sky Blue

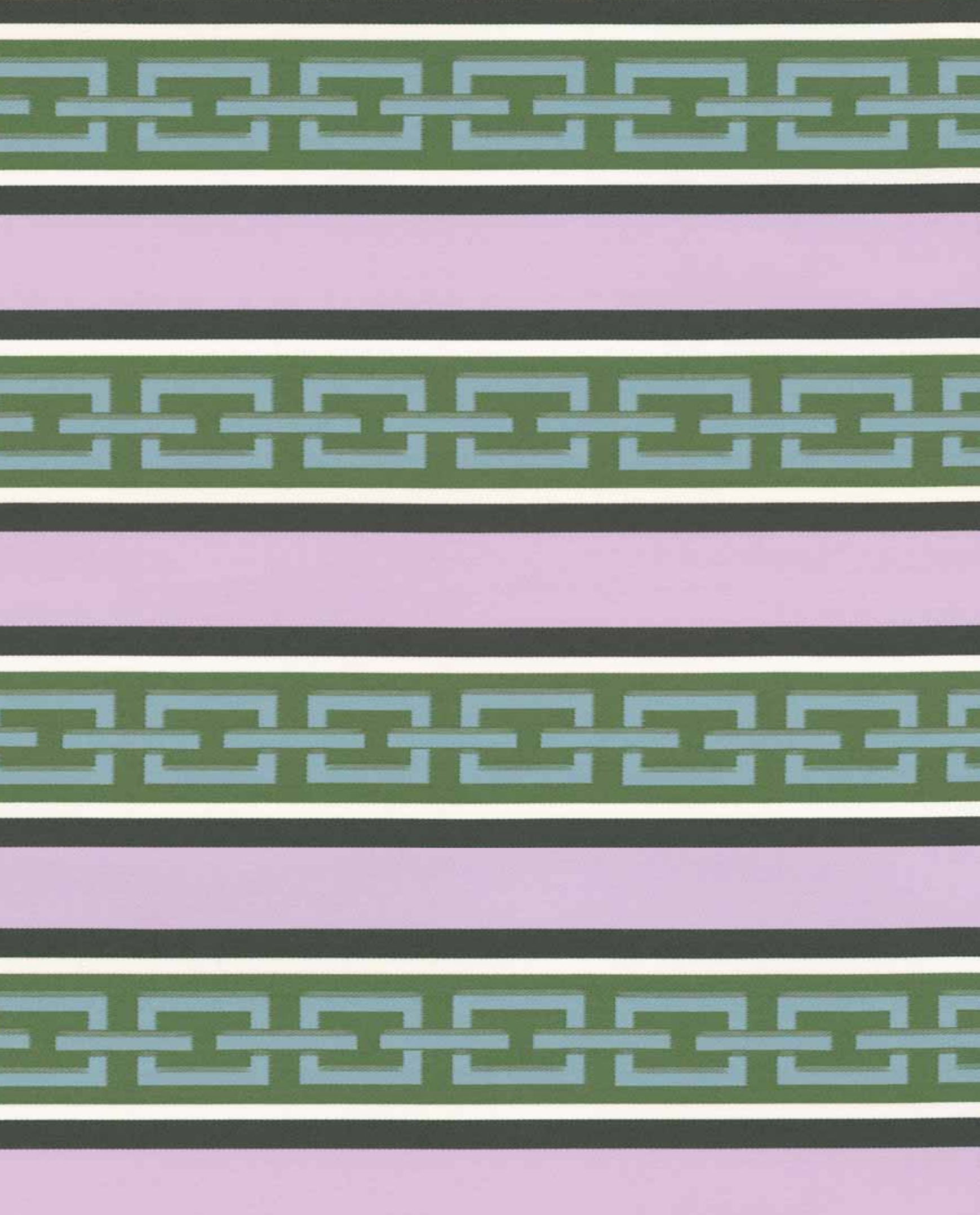


30502-5  
Olive



30502-6  
Brown







# Chain Stripe

30503

A stripe with chain motif, inspired by an early 19th century wallpaper fragment I discovered in the collection of a London museum.

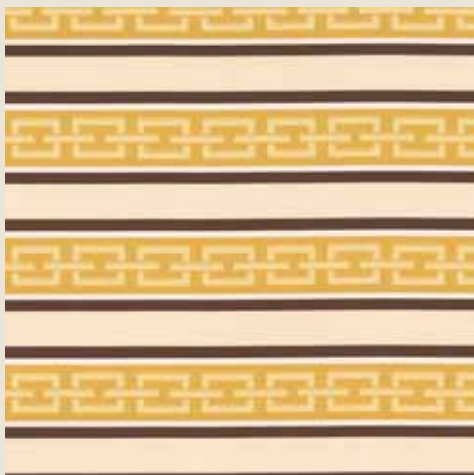
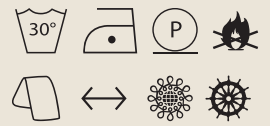
*Una tessuto rigato, in cui le righe sono trasformate in catene. L'ispirazione è un frammento di carta da parati dell'inizio del XIX secolo che ho scoperto nella collezione di un museo a Londra.*

Composition:  
100%PL Trevira CS

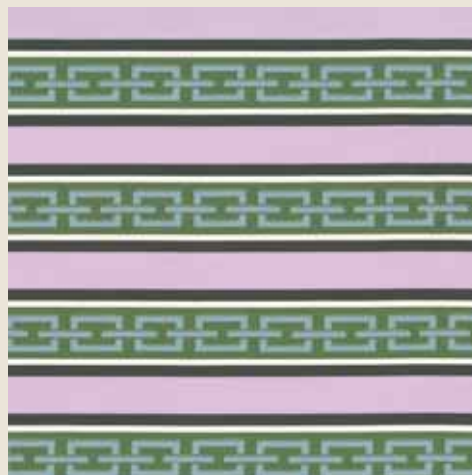
Width: 320cm - 126"  
Vertical repeat: 4cm - 1.5"  
Horizontal repeat: 7.5cm - 3"  
Weight: 470gr/mtl

Drapery  
*Tende e drappeggi*

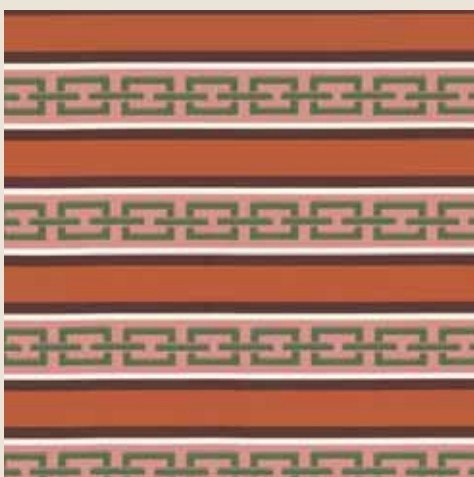
Notes:



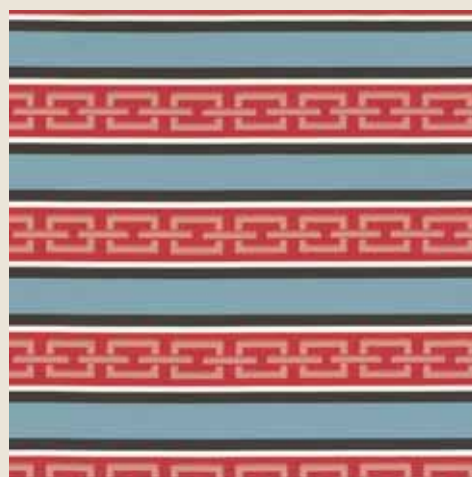
30503-1  
Cream



30503-2  
Lavender

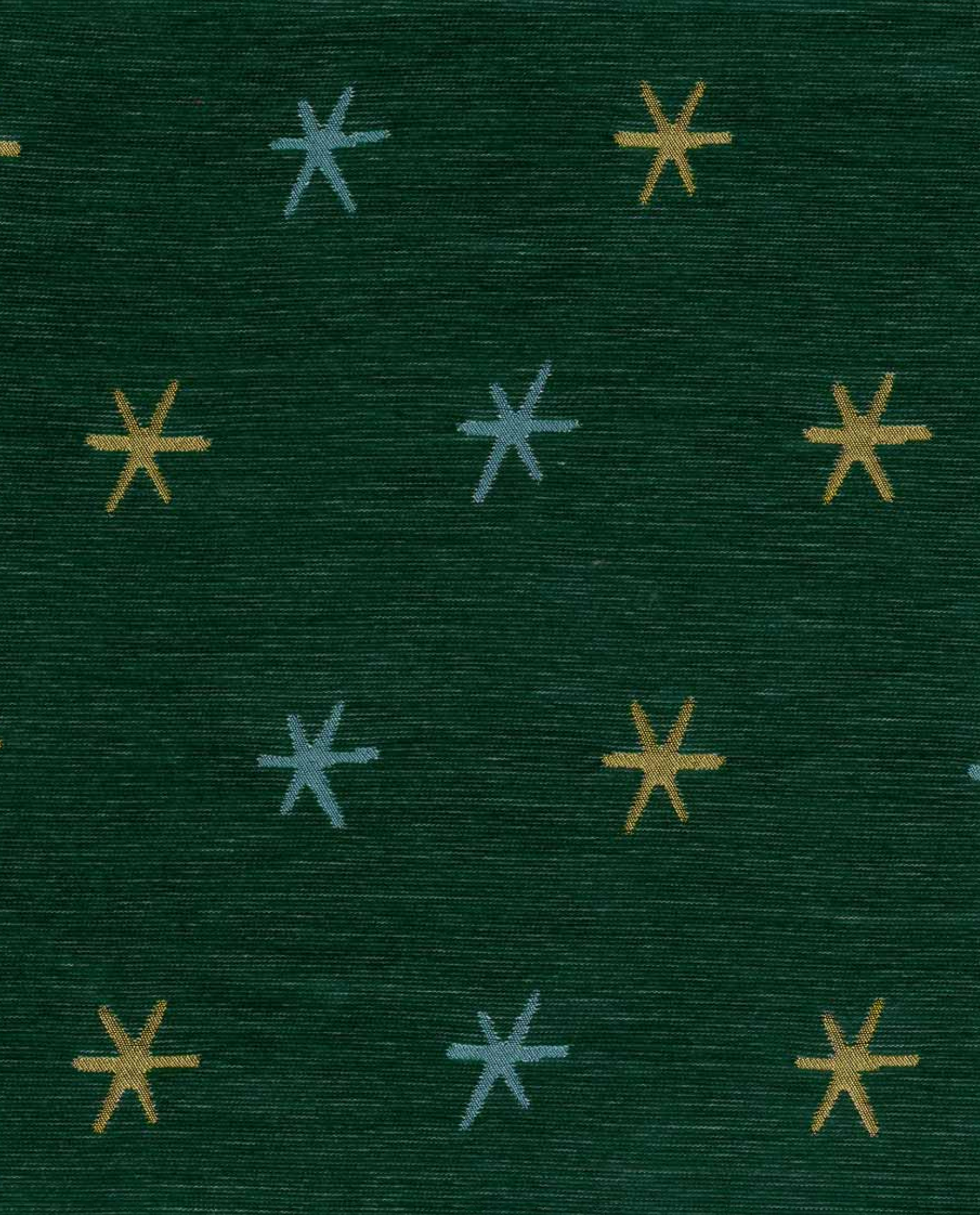


30503-3  
Burnt Orange



30503-4  
Sky Blue







# Astraeus

30504

Sketches of delicate stars, inspired by glowing night skies. At home in the peace and quiet of the English countryside, the stars burn against the dark sky like beacons. Astraeus was the Titan god of stars and planets and the art of astrology.

*Un disegno di stelle delicate, ispirato ad un luminoso cielo notturno. A casa, nella pace e tranquillità della campagna inglese, le stelle brillano come fari contro il cielo scuro. Astreo era il titano, dio delle stelle, dei pianeti e dell'arte dell'astrologia.*

Composition:  
39%VI 29%PA 27%PA-eco 5%PC

Width: 135cm - 53"  
Vertical repeat: 41cm - 16"  
Horizontal repeat: 33.8cm - 13"  
Weight: 420gr/mtl

Heavy use  
*Uso frequente*

Notes:



30504-1  
Emerald



30504-2  
Brown







# Dappled Brick

Unusual and bold, inspired by a painted bath surround I noticed in a book once. The bricks appear almost three dimensional - a trick of the eye.

*Insolito e audace, ispirato ad un pannello dipinto che ho scovato tra le pagine di un libro  
I mattoni sembrano quasi tridimensionali - un'illusione ottica!*

Composition:  
46%CO 36%LI 18%PA-eco

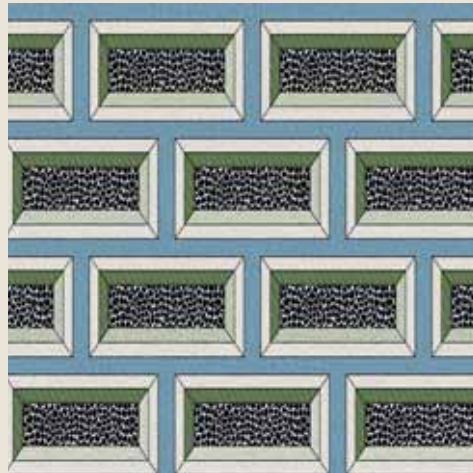
Width: 140cm - 55"  
Vertical repeat: 14cm - 5.5"  
Horizontal repeat: 11.5cm - 4.5"  
Weight: 600gr/mtl

Normal Use  
*Usa medio*

Notes:



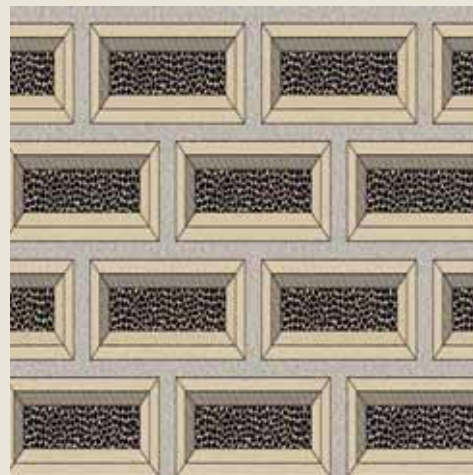
30505-1  
Emerald



30505-2  
Sky Blue

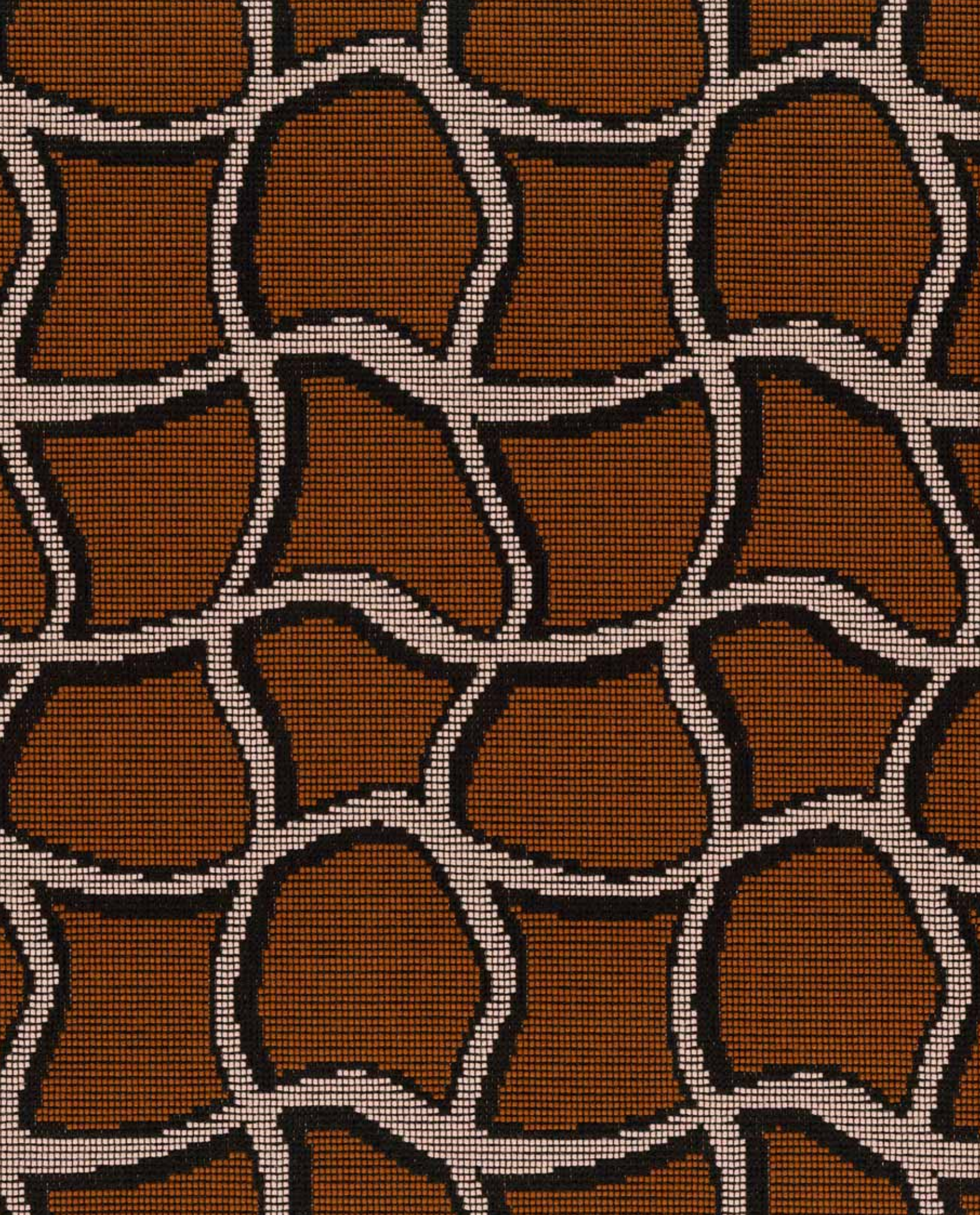


30505-3  
Red



30505-4  
Silver







# Wobble Grid

30506

A reimagined check: less formal, more free-flowing and fun. Whilst I love old chintzes and faded stripes, I also love a geometric pattern, particularly bold ones such as this, which to me feels rather 1970s.

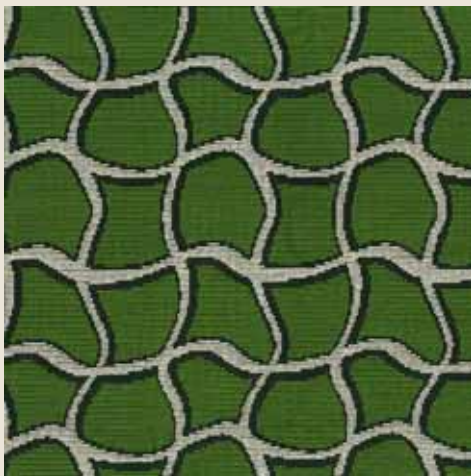
*Un motivo a scacchi reinventato: meno formale, più fluido e divertente. Sebbene io ami i vecchi chintz e le righe sbiadite, adoro i motivi geometrici, in modo particolare quelli audaci come questo, che fanno molto anni Settanta.*

Composition:  
92%VI 8%PA

Width: 140cm - 55"  
Vertical repeat: 17cm - 6.5"  
Horizontal repeat: 10cm - 4"  
Weight: 990gr/mtl

Heavy Use  
*Uso frequente*

Notes:



30506-1  
Emerald



30506-2  
Red



30506-3  
Brown







# Rousham

30507

Sketches of an Arcadian garden, inspired by wondrous Rousham House and Gardens, Oxfordshire. I visit this garden close to me in the countryside as often as I can. It is a classical paradise, a mysterious and ancient-feeling landscape complete with grottoes, pools and crumbling statues.

*Dallo schizzo di un giardino arcadico, ispirato ai meravigliosi giardini di Rousham House, nell'Oxfordshire. Visito questo giardino nella campagna inglese vicino a casa mia ogni volta che posso. È un paradiso classicheggiante, che offre paesaggi misteriosi e dagli echi antichi con tanto di grotte, stagni e statue decadenti.*

Composition:  
55%CO 45%LI

Width: 145cm - 57"  
Vertical repeat: 68cm - 27"  
Horizontal repeat: 70cm - 27"  
Weight: 400gr/mtl

Heavy Use  
*Uso frequente*

Notes:



30507-1  
Pistachio



30507-2  
Pink



30507-3  
Cream



30507-4  
Sky Blue







# Ribbon Bouquet

30508

Archive Rubelli fabric, brought up to date with colourful backgrounds. I am always drawn to old floral fabrics, but sometimes old colours can appear a little too dull to my eye. Our updated peach and lavender versions on the other hand introduce just the right amount of sugar.

*Il punto di partenza è un tessuto proveniente dall'archivio Rubelli reinterpretato con sfondi colorati. Sono sempre stato attratto dai vecchi tessuti floreali, ma a volte i colori antichi possono apparire troppo noiosi. Le nuove varianti, pesca e lavanda, aggiungono quel giusto pizzico di vivacità.*

Composition:  
55%CO 45%LI

Width: 145cm - 57"  
Vertical repeat: 118cm - 46.5"  
Horizontal repeat: 72cm - 28.5"  
Weight: 390gr/mtl

Heavy use  
*Uso frequente*

Notes:



30508-1  
Peach

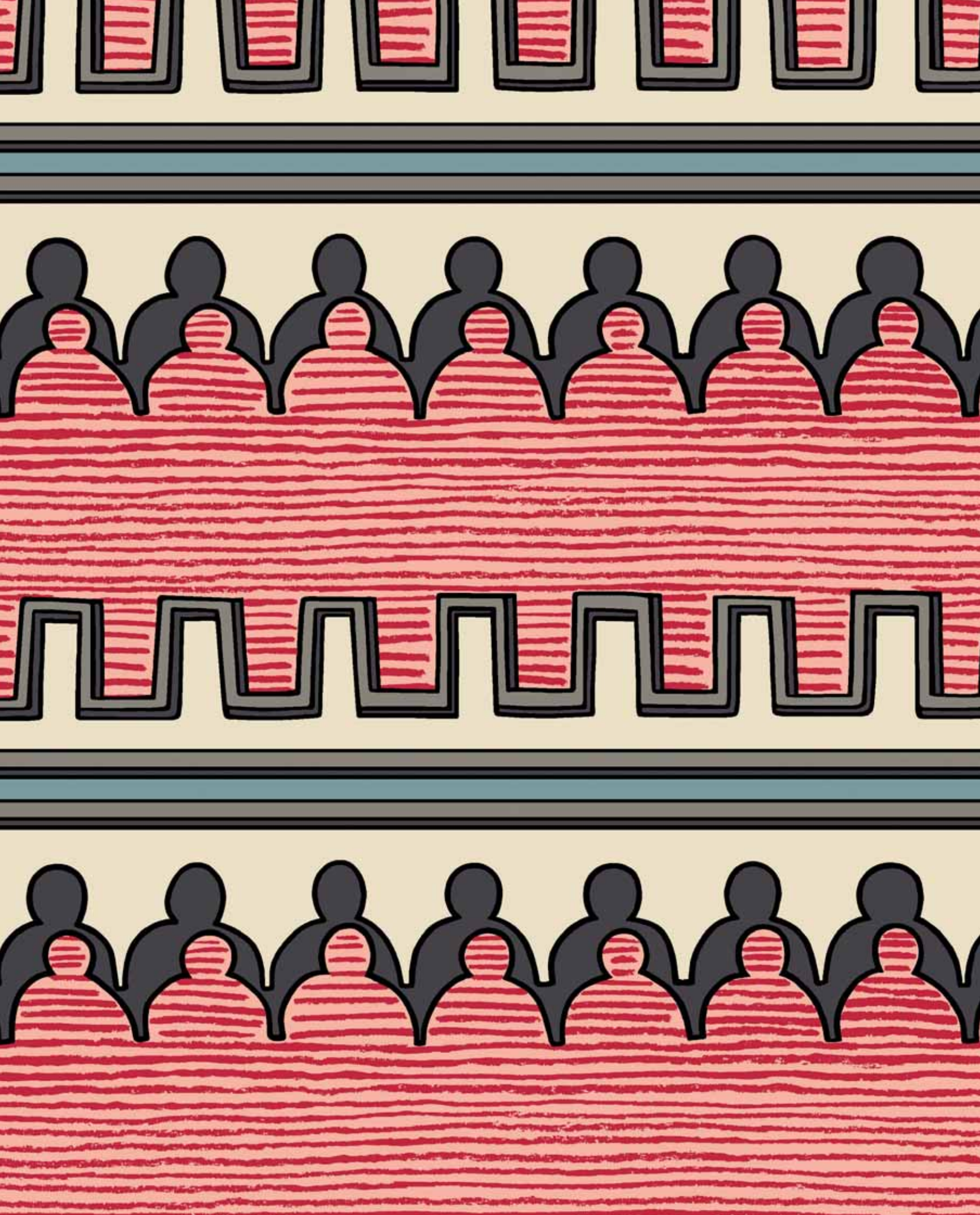


30508-2  
Cream



30508-3  
Lavender







# Gothic Folly

30509

Sketches of castellated and gothic motifs, inspired by a folly in the grounds of Painswick Rococo Garden, Gloucestershire, another favourite of mine. It was a hot summer's day when I noticed the castellated roof on this folly; this design materialised before my eyes immediately.

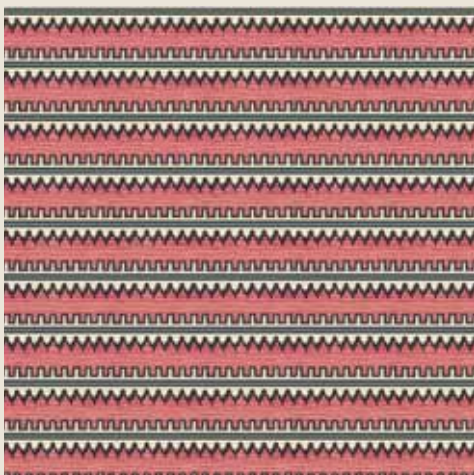
*Motivi gotici e merlati, ispirati da un capriccio nell'area del giardino rococò di Painswick, nel Gloucestershire, un altro dei miei luoghi preferiti. Era un giorno caldo d'estate quando ho notato il tetto merlato su questo capriccio; immediatamente questo motivo mi si è materializzato davanti agli occhi.*

Composition:  
100%CO

Width: 150cm - 59"  
Vertical repeat: 14cm - 5.5"  
Horizontal repeat: 24.5cm - 9.5"  
Weight: 280gr/mtl

Heavy use  
*Uso frequente*

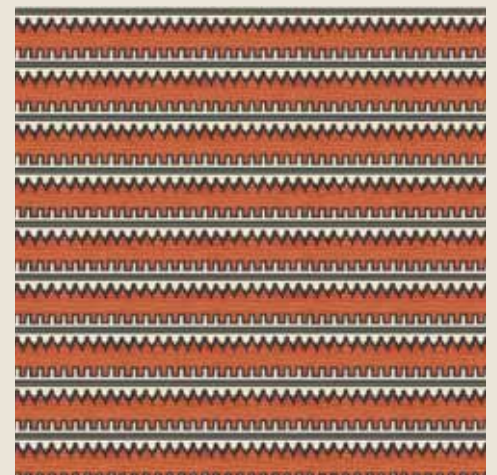
Notes:



30509-1  
Red



30509-2  
Yellow



30509-3  
Burnt Orange







# Quatrefoil

30510

Sketches of interlocking geometric shapes, inspired by carpet designs from the French designer Emilio Terry, one of my aesthetic heroes. A highly whimsical print.

*Uno schizzo di forme geometriche ad incastro, ispirate dai disegni dei tappeti del designer francese Emilio Terry, uno dei miei riferimenti estetici. Una stampa molto stravagante.*

Composition:  
100%CO

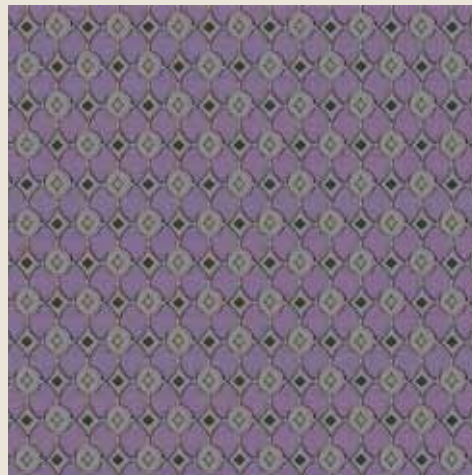
Width: 20cm - 59"  
Vertical repeat: 20cm - 8"  
Horizontal repeat: 15cm - 6"  
Weight: 280gr/mtl

Heavy Use  
*Uso frequente*

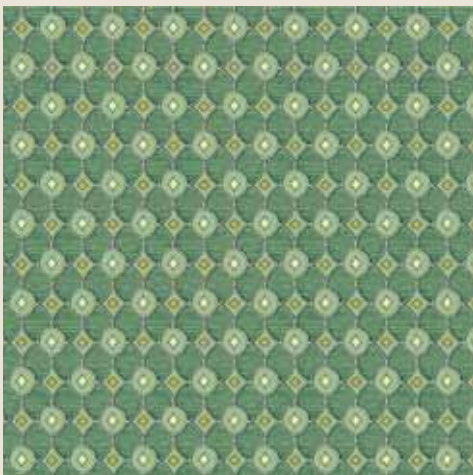
Notes:



30510-1  
Brown



30510-2  
Lavender



30510-3  
Pistachio



30510-4  
Cream







# Rose Garden

30511

Sketches of classical statues and flowers recall an English rose garden in high summer. I grow old-fashioned roses in my own garden in the countryside, and never tire of their delicate beauty and delicious fragrance.

*Disegni di statue classiche e fiori ricordano un roseto inglese in piena estate. Nel mio giardino in campagna coltivo rose antiche, e non mi stanco mai della loro delicata bellezza e della fragranza deliziosa.*

Composition:  
100%CO

Width: 150cm - 59"  
Vertical repeat: 68cm - 27"  
Horizontal repeat: 70cm - 27.5"  
Weight: 280gr/mtl

Heavy Use  
*Uso frequente*

Notes:



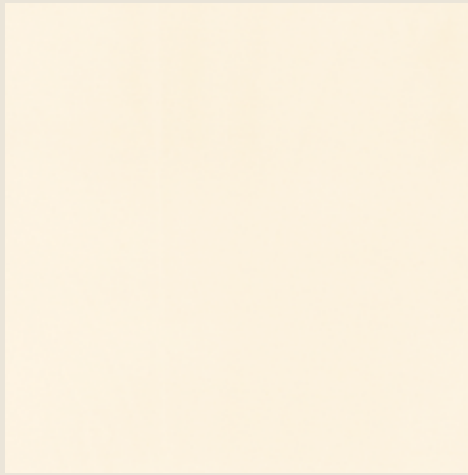
30511 -1  
Multi



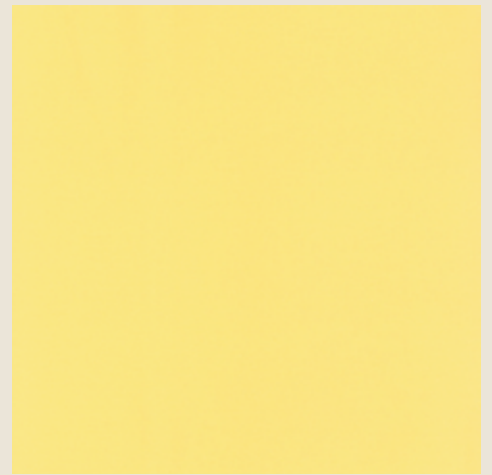
# *Napier*



30512-1  
White



30512-2  
Cream



30512-3  
Yellow



30512-4  
Peach



30512-5  
Brown



30512-6  
Chocolate



To compliment the collection, a plain satin in both dusty pastel shades and rich jewel tones. Satin fabrics always feel supremely elegant to me and utterly glamorous at the same time: very London in the 1930s.

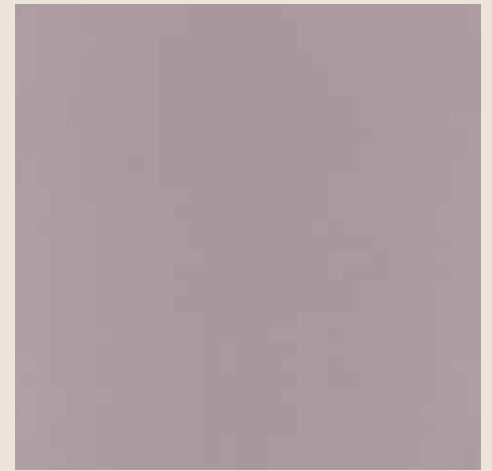
*Per completare la collezione un raso unito, disponibile sia in tonalità pastello polverose che in toni che richiamano i colori delle gemme preziose. Trovo il raso estremamente elegante e allo stesso tempo molto affascinante: molto Londra anni Trenta.*

Composition:  
100%CO

Width: 145cm - 57"  
Weight: 370 gr/mtl

Heavy Use  
*Uso frequente*

Notes:



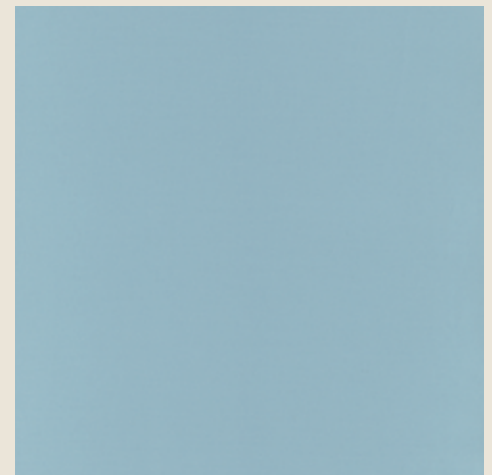
30512-10  
Lavender



30512-7  
Olive



30512-8  
Pistachio



30512-9  
Sky Blue



*Publisher* Rubelli SPA  
*Art Direction* Luke Edward Hall  
*Photo* Stefano Scattà  
*Graphic Design* Studio Blanco  
*Text* Luke Edward Hall  
*Printing* Grafiche Antiga



Imo Certification  
*Certificato Imo*



Eco-sustainable yarns  
*Filati ecosostenibili*

Any reproduction, representation or modification, in full or party, is expressly prohibited. @Rubelli Marketing 2022  
- All rights reserved

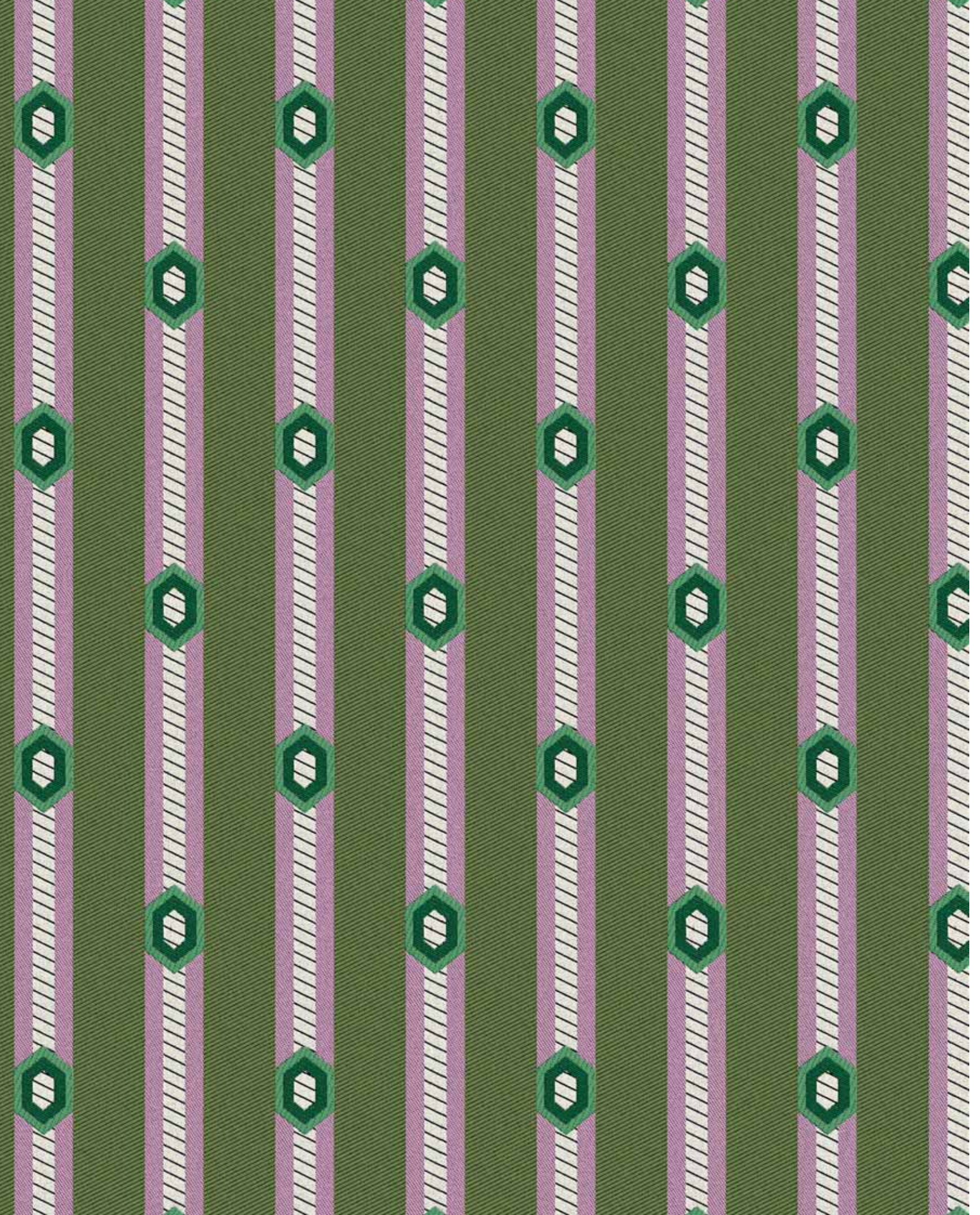
To browse all the Rubelli Group collections and for technical info, please visit [www.rubelli.com](http://www.rubelli.com)



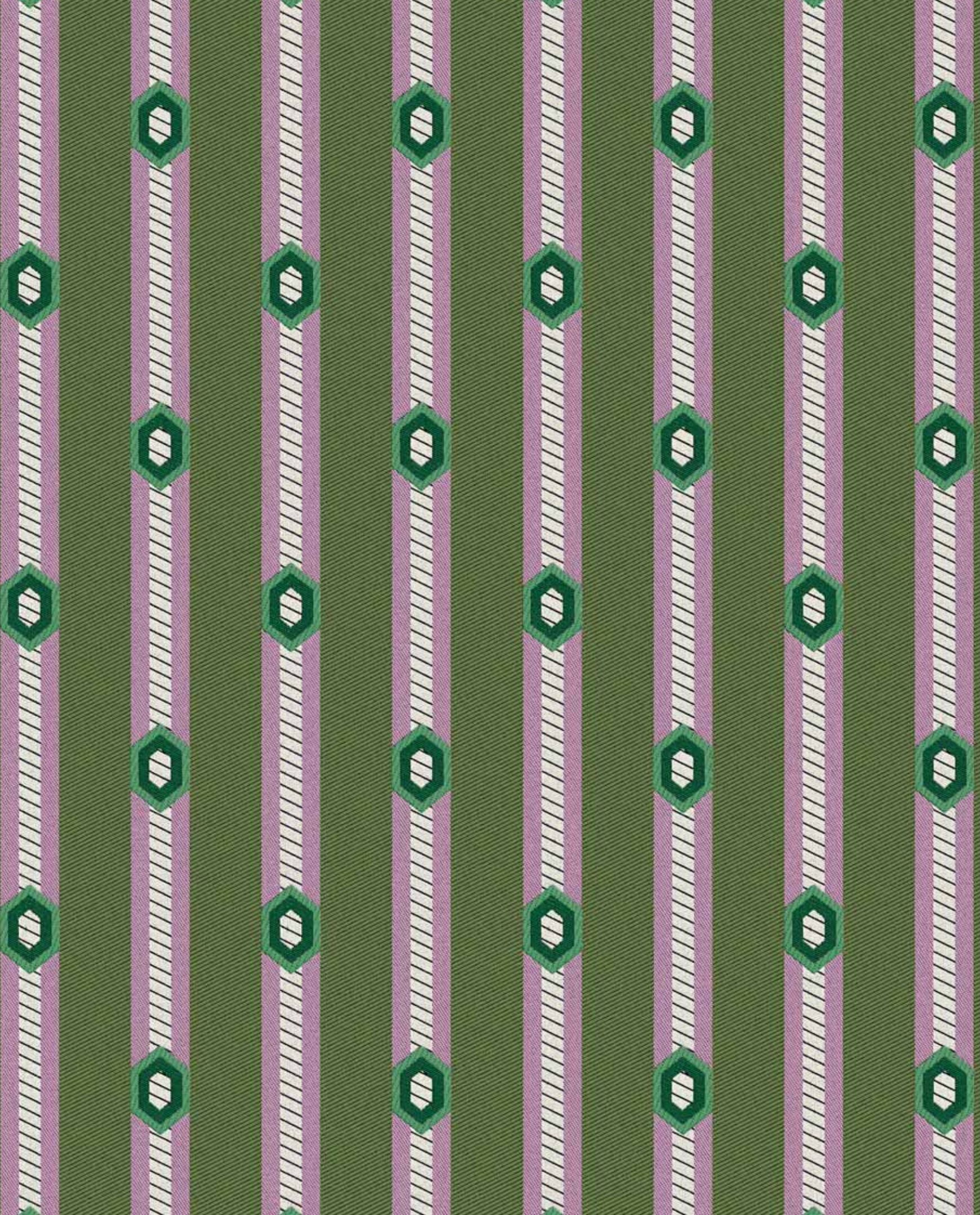


*Digital version of this catalogue*  
[r.rubelli.com/rub2022](http://r.rubelli.com/rub2022)











*Luca Edward Hall*

for

RUBELLI



RUBELLI.COM